



2025-2026

AGRO

CATALOGUE



05

GRAIN AND FERTILIZER STORAGE

06: GALVANIZED BINS

11: HOPPER CONES

12: BIN MONITORING

13: SMOOTHWALL BINS

16: BIN ACCESSORIES

18

PORTABLE HANDLING

19: AUGERS

24: CONVEYORS

26: SPRAYING ACCESSORIES

27

FARMYARD BUILDINGS

28: FARM BUILDINGS

32: BUILDING SUPPLIES



33

FUEL STORAGE

34: FUEL TANKS

36: SECURITY AND MONITORING

37: LUBRICANT STORAGE

38: LUBRICANT STORAGE ACCESSORIES

39: PROPANE STORAGE

40

LIVESTOCK FEEDING AND FENCING

41: LIVESTOCK EQUIPMENT

44: FEEDING EQUIPMENT

47: FENCING SUPPLIES



BINLogic

HIGHLY LOGICAL SOLUTION



AgZONE
DIGITAL SOLUTIONS

Choose AgZone BINLogic for a smarter, simpler and more cost-effective grain monitoring experience.

With our 'One Device - One Bin' approach, you can confidently manage your grain, expand your operations and protect your harvest's quality.

Why is AgZone BINLogic a superior grain-monitoring product?

Simplified Monitoring: No complicated setups or multiple devices required.

Unmatched Self-Power: Integrated solar panel ensures continuous operation along with a robust battery backup.

Economical and Scalable: Our wireless device is subscription based with no upfront costs and our handheld device provides an easy entry point into grain monitoring.



Stop by your local CO-OP® Agro Centre today to learn more about AGZONE™ BINLOGIC™.



PROTECT YOUR INVESTMENT: SOLUTIONS. SECURITY. SERVICE.

Safeguard your investment with Co-op grain and fertilizer storage. Your local Co-op Agro Centre has on-farm storage experts who can help you with all these aspects.

Our bin options include:

- Smoothwall or galvanized
- Hopper bottoms or large flats

- Well-known brands such as AGI Westeel and Meridian
- Co-op Bins — quality and value from the name you trust

Once you've chosen the right bins for your farm, we can help you determine your aeration and grain monitoring needs.

The newer systems let you monitor your bins, right in the palm of your hand. This means there is less chance of spoilage, and therefore loss, as you can run fans at the right time.

Visit your local Co-op Agro Centre to find the best products, technology and expertise to protect the value of your grain.

GALVANIZED BINS

CO-OP BINS



THE QUALITY YOU EXPECT FROM THE NAME YOU TRUST.

Market leading 4" corrugation | Galvanization: G90 wall/G115 roof | 4000 lb. roof load | 116.5" x 32" unstiffened wallsheets

BIN PACKAGE INCLUDES:

One-year manufacturer warranty | Roof remote cap opener | Grain gauge | Inspection hatch | Sidewall ladders | Roof ladder | Bin entry safety accessories | Standard hopper cone bolt pattern

EQUIP TEAM

Keep your operation running smoothly with the latest advancements in on-farm equipment for storage, handling and monitoring. With over 300 team members, the Co-op Equip Team has the products, technology and expertise you need to protect your harvest.



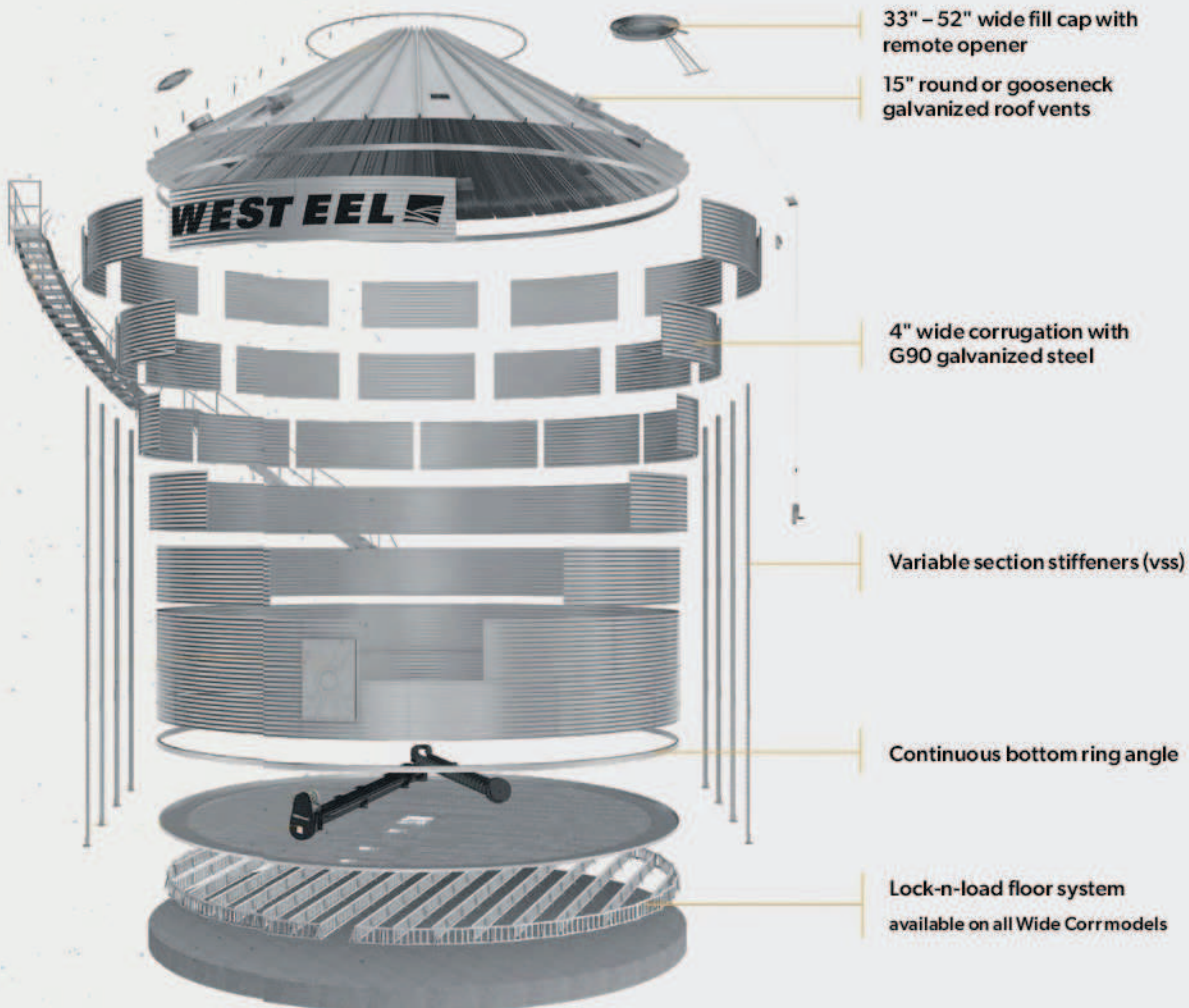
AGI WESTEEL FLAT BOTTOM BINS

PART	DESCRIPTION	BUSHEL	OVERALL HEIGHT
195759	WESTEEL 3607 UNSTIFF FLAT BTM BIN	24,740	35' 7"
232101W	WESTEEL 3609 STIFF FLAT BTM BIN	31,030	42' 11"
232121W	WESTEEL 4209 STIFF FLAT BTM BIN	42,820	44' 8"
232141W	WESTEEL 4809 STIFF FLAT BTM BIN	56,700	46' 4"

WIDE CORR STIFFENED
FARM SERIES

WIDE CORR UNSTIFFENED
FARM SERIES

All AGI Westeel bins are professionally engineered to provide optimum structural integrity from top to bottom.



GALVANIZED BINS

MERIDIAN HOPPER CONE BINS

STANDARD FEATURES

30° sloped roof and high ribs for extra strength | 5" wall corrugation for minimal hang-up | Double-bolted vertical wall seams | Unique bin-mounting ring provides a clean, smooth finish at the bin-to-cone connections | Roof and wall ladder included

Meridian Corrugated Hopper Bottom Grain Bin Combos offer superior strength and durability, along with ease of transportation and set-up and the efficiency of a hopper bottom cleanout. Wide load shipping issues are eliminated by freighting the larger 24' and 27' split cones in two sections. These grain bins are available from 3,300 – 13,600 bushel capacities, along with a range of options to suit your storage needs.

OPTIONS AVAILABLE

15" round roof vents | Grain-level indicator

SINGLE-CORR HOPPER MOUNT BINS (UNSTIFFENED)			
HOPPER COMBO	BUSHEL CAPACITY	DIAMETER	OVERALL HEIGHT
1805 SC	4874	18'	32' 11"
1806 SC	5690	18'	36' 8"
2105 SC	6804	21'	35' 1"
2106 SC	7914	21'	38' 10"
2406 SC	10,498	24'	41' 1"
2706 SC	13,643	27'	43' 5"

Measurements are as accurate as possible but should only be considered as an estimate and are in no way guaranteed to be exact.



MERIDIAN FLAT BOTTOM BINS

GALVANIZED BINS

Meridian Corrugated Flat Bottom Bins are the ideal solution for large capacity grain storage. These bins are built in diameters from 15' to 48', with capacity ranges of up to 76,000 bushels. With over 35 years of experience building corrugated bins, you can rely on Meridian for grain storage and handling systems. When it comes to larger flat bottom bins, the 36' to 48' diameter bins are our most popular bins with features such as a large bin lid for easy access, three-panel walk-in door, unload/sweep, full floor aeration and temperature cables.

DIAMETER	TIERS	BUSHEL	WALL HEIGHT (A)	OVERALL HEIGHT (B)	AUGER REQUIRED
36'	7	25,364	26' 6"	36' 5"	66'
36'	9	31,846	34' 0"	43' 11"	79'
42'	9	43,942	34' 0"	45' 8"	85'
42'	10	48,353	37' 10"	49' 5"	95'
42'	11	52,764	41' 7"	53' 3"	95'
48'	10	64,583	37' 10"	51' 4"	105'
48'	11	70,337	41' 7"	55' 1"	115'
48'	12	76,092	45' 4"	56' 10"	115'



Flexible financing, seasonal success

Grow with tailor-made equipment leasing options to match your seasonal revenue.

Defer your first lease payment for six months.*

- On a five-year term with 5% down.

OR

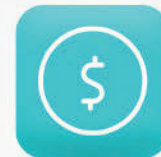
Defer your first lease payment for one full year.*

- On a five-year term with 10% down.



Ask about leasing options at your local CO-OP or apply online!

Mention promo code **25COOPSKIP** to take advantage of this offer.



*Subject to credit and agriculture asset approval. Put 5% down to defer regular payments for six months, or put 10% down to defer regular payments for 12 months. This offer cannot be combined with any other discount or offer and is valid until October 31, 2025.



1-844-569-4833

GALVANIZED BINS

AGI WESTEEL HOPPER CONE BINS



AGI Westeel offers a range of galvanized solutions to meet the diverse needs and applications found in agriculture today. Each solution incorporates the latest innovation and engineering in storage technology, providing you with confidence that the material you are storing is indeed protected.

STANDARD FEATURES

Ultra-flat | 4" wide corrugated sheets | 24" inspection hatch | 15' to 24' diameters | Includes 5 or 6 tier layer with a cone | Remote cap opener

COLLABORATION WITH CORR GRAIN

Co-op is proud to work with Regina-based CORR Grain Systems Inc., who provides high-quality grain storage and handling systems in the marketplace. CORR Grain also installs large grain-storage bins, grain dryers and grain handling products from industry-leading manufacturers.



HOPPER CONES				
			WITH FOUNDATION	W/O FOUNDATION
PART	DESCRIPTION	BUSHELS	OVERALL HEIGHT	OVERALL HEIGHT
293144SS	HOPPER SSW 1605/06 C/W FDN KIT	314	8' 1"	7' 9"
195711SS	WESTEEL 1606 SS UNSTIFF BIN FOR HOPPER	3991	26' 6"	26' 6"
	1606 COMBO	4305	34' 5"	34' 1"
293081SS	HOPPER SSW 1805/06 C/W FDN KIT	448	8' 7"	8' 3"
196008SS	WESTEEL 1805 SS UNSTIFF BIN FOR HOPPER	4302	23' 5"	23' 5"
	1805 COMBO	4750	31' 10"	31' 6"
293281SS	HOPPER SSW 2105/06 C/W FDN KIT	711	9' 8"	9' 4"
196022SS	WESTEEL 2106 SS UNSTIFF BIN FOR HOPPER	7003	27' 11"	27' 11"
	2106 COMBO	7714	37' 5"	37' 1"
293299SS	HOPPER SSW 2405/06 C/W FDN KIT	1062	10' 8"	10' 4"
195778SS	WESTEEL 2406 SS UNSTIFF BIN FOR HOPPER	9242	28' 10"	28' 10"
	2406 COMBO	10,304	39' 4"	39' 0"

Measurements are as accurate as possible but should only be considered as an estimate and are in no way guaranteed to be exact.

Bushel capacities are based on 1.244ft³/bushel, 6% compaction, and grain peaked into the roof area at 28° angle of repose.

This hopper cone has been specifically engineered to provide optimum support for your AGI Westeel wide-corr or standard-corr bin, protecting your investment and ensuring decades of worry-free operation.

STANDARD FEATURES

Available for 14', 15', 16', 18', 19', 21', 24' and 27' diameter bins | 35° cone slope and 24" discharge clearance | Inspection hatch at cone bottom | One-piece vented legs | Rack-and-pinion slide gate with long handle | Optional accessories: Hopper aeration system | Engineered steel foundations | Cone 5-year warranty (structural)



WE SUPPORT LOCAL

Co-op works with hopper cone manufacturers local to your community. With hopper cones available in sizes ranging from 14' – 27', our Equip Team of local experts are here to help find the right size of hopper bottoms for your operation's needs.

BIN MONITORING

BINLOGIC



AgZONE
DIGITAL SOLUTIONS

AgZone BINLogic is a high-value, low-cost alternative to other grain monitoring solutions currently available on the market. With easy installation, real-time data accessibility and seamless compatibility, BINLogic ensures you are always in control.

BINLOGIC WIRELESS DEVICE

Each solar-powered BINLogic Wireless device connects to bin monitoring cables, collects the temperature and/or moisture data and sends the information to the Co-op AgZone BINLogic app.



BINLOGIC HANDHELD DEVICE

The BINLogic Handheld device is a compact unit that is manually connected to a single bin cable to collect data. The data is then sent to the user's mobile device via Bluetooth for them to monitor the bin. The device can read multiple bins prior to sending the data to the user's mobile device.



OPI BLUE

OPI offers a variety of solutions to satisfy the user's operation. From handheld to fully automated fan control, OPI offers solutions to keep grain in condition and you operating at your technological comfort level.



OPI BLUE LITE

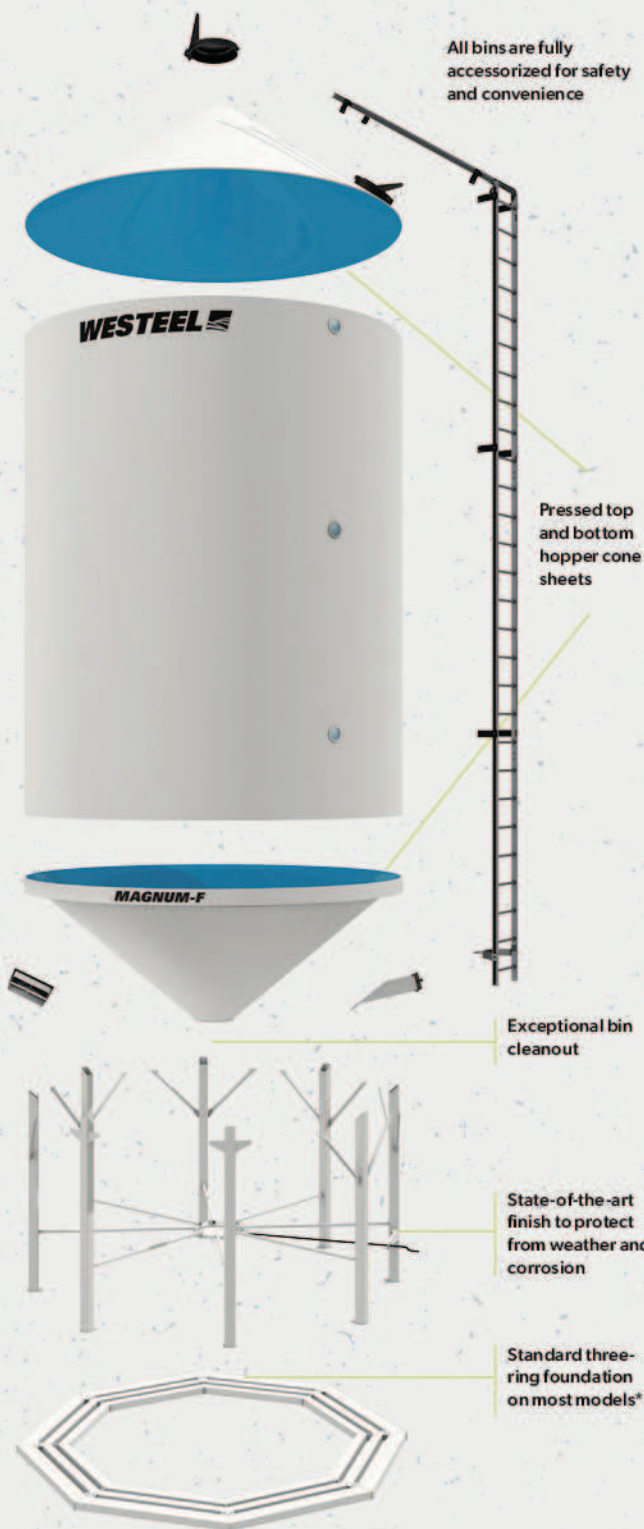
Provides plug-n-play visibility inside your grain bins for manual data collection with digital backup.



OPI BLUE

This wireless system delivers grain condition data to any internet connected device. Add automated fan control and CO2 monitoring for the best experience.





Designed with customers in mind, the AGI Westeel's Magnum Series of professionally engineered smoothwall hopper bottom bins provides years of trouble-free clean-out and superior protection from corrosion, and represents one of the best values in smoothwall storage.

STANDARD FEATURES

Superior protection from corrosion | 40° or 55° cone slope
 | Exceptional bin cleanout | 10-year structural guarantee |
 5-year finish warranty (1-year warranty for commercial usage)

MAGNUM-F

Specifically designed for safe, long-term storage of fertilizer, grain and seed

MAGNUM-F SERIES BINS

MODEL	TONNES*2	DIAMETER	HEIGHT
1412F	67	14'	23' 7"
1612F	91	16'	25' 9"
1620F	136	16'	33' 9"
1625F	165	16'	38' 9"
1630F	191	16'	42' 11"
1830F	248	18'	45' 4"

*based on 62 lb./cu.ft.
 2in metric tonnes

MAGNUM-G

Perfectly designed for the storage of grain, seed and feed

MAGNUM-G SERIES BINS

MODEL	BUSHELS	DIAMETER	HEIGHT
1615G	3242	16'	28' 9"
1620G	4091	16'	33' 9"
1625G	4939	16'	38' 9"
1820G	5287	18'	35' 4"
1825G	6361	18'	40' 4"
1830G	7434	18'	45' 4"

Measurements are as accurate as possible but should only be considered as an estimate and are not guaranteed to be exact.

SMOOTHWALL BINS

MERIDIAN GRAINMAX BINS

STANDARD FEATURES

Powder-coated paint finish (exterior) | Rack-and-pinion slide gate with crank | Meridian solid ladder with safety-grip rung
| 27" spring-loaded, vented top lid | 24" minimum clearance under bottom slide

GRAINMAX BINS				
MODEL	BUSHEL	DIAMETER	HEIGHT	MINIMUM AUGER
GM2300	2301	14'	26' 5"	46'
GM3000	3264	16'	28' 11"	53'
GM4000	4118	16'	33' 11"	59'
GM5000	4973	16'	38' 11"	66'
GM6000	5828	16'	43' 11"	72'
GM6400	6405	18'	40' 6"	66'
GM7500	7488	18'	45' 6"	79'



MULTI-PURPOSE BINS

All-welded, smoothwall construction | HSS (hollow structural steel) legs and bracing | Powder-coated interior and exterior with superior coating to other powder and liquid coatings | Superior corrosion resistance | Stainless steel rack-and-pinion slide plate with crank | Full sidewall and roof ladder with retractable bottom safety section | 27" vented top lid, spring-loaded and ground operated | Minimum 40° bottom cone and 35° roof cone | 24" minimum clearance under the slide gate

MULTI-PURPOSE FERTILIZER BINS			
MODEL	BUSHEL	DIAMETER	HEIGHT
1412	2084	14'	25' 4"
1615	3264	16'	28' 11"
1620	4119	16'	33' 11"
1625	4973	16'	38' 11"
1630	5813	16'	43' 11"
1815	4233	18'	30' 6"
1820	5312	18'	35' 7"
1825	6392	18'	40' 6"
1830	7470	18'	45' 6"



BIN ACCESSORIES

HES AIR CUBES



PRISM (3000 BU)
Air Cube (3096112)



CUBE (5000 BU)
Air Cube (3093341) |
Heat Wave Series (3133782)



CUBE-X (8000 BU)
(3133808)



Optimal ducting | Retrofit or new-bin installation | Lightweight with no heavy-lifting equipment required

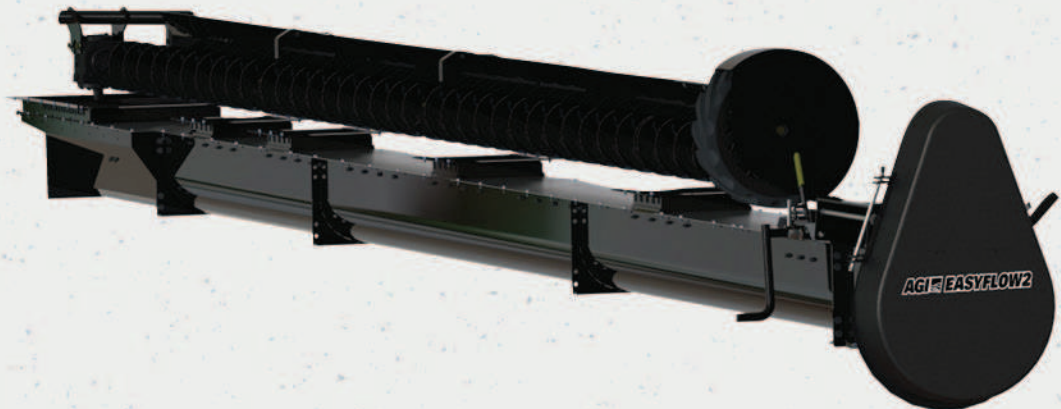
AGI WESTEEL FLOOR SYSTEM



AGI Westeel's premium Lock-n-Load Floor System delivers maximum performance when full volume conditioning or natural air-drying is required. The system's unique use of multiple flashing, complete with appropriate hardware, provides a better seal at the bin's edge and reduces installation time.

AGI WESTEEL EASYFLOW2 BIN UNLOAD

AGI EasyFlow2 Unload System is designed for the rigours of on-farm use and features superior durability, strength and performance. Make grain clean-out easy and efficient with the AGI U-Trough or Tube unload system.





IN-LINE CENTRIFUGAL FANS

AGI in-line fans are a versatile option for hopper bins with a horizontal tube or smaller flat bottom bins. They perform best at low to medium static pressures.

| 3 HP (3018835) | 5 HP (3018843)
| 7.5 HP (3020054) | 10 HP (3028966)
| 15 HP (3169521)



HIGH-SPEED CENTRIFUGAL FANS

The high-speed centrifugal fans are designed to maximize airflow at medium to high static pressure. Mates directly with The Rocket inlets.

| 3 HP (3018819) | 5 HP (3018827)
| 7.5 HP (3020062) | 10 HP (3033016)



THE ROCKET

The Rocket is the premium hopper aeration system. Designed to facilitate both conditioning and natural air-drying applications, air delivery penetrates the core of the bin where air is most difficult to move.



LOW TEMPERATURE DOWNSTREAM HEATERS

Low temperature downstream heaters allow for 24-hour grain drying in high humidity conditions or at low ambient temperatures.



PORTABLE HANDLING



MOVE PRODUCT WITH CONFIDENCE

Safely move your grain into the bin for storage or into the truck for transporting with portable augers and belt conveyors. With reliable suppliers such as AGI Westfield, AGI Batco, AGI Hutchinson and Meridian, Co-op can help you get it done quickly and efficiently.

Our selection of portable augers and conveyors offers:

- High performance, high-capacity options to make your job easier
- Durable and low maintenance designs
- A series of conveyors optimized for gentle handling

With auger and conveyor sizes to fit every farm, and experts in on-farm portable handling to help you, your local Co-op Agro Centre has the product that's best for your operation.

POWERFUL UTX U-TROUGH AND STX² AUGERS

AGI Westfield's truck loading augers are constantly improving to meet the needs of farmers today. Their augers are built for durability, engineered for high capacity and designed to be easy to use.

To increase bin reach, improve traction and tighten the turning radius, the UTX and STX² augers feature an impressive mover kit. Its compact design gives better access to large diameter hopper bins and can conquer tough terrain.

MODEL	CAPACITY
UTX 44	up to 9000 BPH
STX ² 10-41	up to 5500 BPH
STX ² 10-46	up to 5500 BPH
STX ² 10-51	up to 5500 BPH



AUGERS

AGI WESTFIELD A-FRAME AND SCISSOR LIFT AUGERS



AGI WESTFIELD MKX² AND X² SERIES AUGERS

The MKX² has been designed to withstand all the wear and tear a farm can throw at it. The improved durable boot is built to last longer and make inspection and servicing easier, while also making life easier with a better PTO holder and an additional holder to store hoses.

It also has a new open discharge spout that allows for a more efficient flow out of the tube, moving grain quickly with up to 20% less power.

MODEL	LENGTH	CAPACITY
MKX ² 10	53'-83'	up to 6000 BPH
MKX ² 13	64'-114'	up to 11,000 BPH
MKX ² 16	85'-125'	up to 23,000 BPH
X ² 10	63'-83'	up to 6000 BPH
X ² 13	74'-94'	up to 11,000 BPH



X-TEND RETRACTING SWING AUGER

AGI Westfield's retracting swing auger gives you the convenience of being able to extend, swing side-to-side and retract without having to move or reposition your truck. Built to match the capacities of MKX² 13 and MKX² 16. Use this hopper to save time during your busiest seasons.

FEATURES

Upper drive adjustable motor mount | 4" shielded single "A" belt and pulley and pre-lubricated top end bearing | 6", 8", 10" double "B" belts and pulley with heavy-duty flange ball bearing | 13" triple "B" belts and pulley with heavy-duty flange ball bearing | Hand swivel mount bracket for quick mounting to truck box, wagon or feed bin

OPTIONS

Bolt-on tube clamps for attaching support bracing | Bolt-on flight support bushing with grease fitting (standard on 13" models) | Handy steel hopper with flight support bearing. Also available with hinged lid for 6" to 10" models | Shielded intake assembly bolts to basic drive section or extension, shown with optional adjustable feed control | Flex spout | Poly hopper | Triple groove pulley (comes with three belts for long 10" augers)

DIAMETER	RECOMMENDED PULLEY SIZE FOR 1,750 RPM MOTORS	RPM	AUGER PULLEY SUPPLIED	BELT(S) SUPPLIED	EXTENSIONS AVAILABLE
4"	1A 2" - 2 1/4"	440 - 490	1A 8"	1 - A 33	5', 10'
6"	2B 3 1/2" - 4"	480 - 550	2B 12.7"	2 - B 48	5', 10', 15'
8"	2B 3 1/4" - 3 1/2"	445 - 480	2B 12.7"	2 - B 51	5', 10', 15'
10"	2B 3 1/4" - 3 1/2"	380 - 410	2B 15"	2 - B 62	5', 10', 15'
13"	3B 3 1/4" - 3 1/2"	355 - 380	3B 16"	3 - B 67	5', 10', 20'

AGI UTILITY AUGERS



AUGERS

MERIDIAN TRUCK LOADING AUGERS



STANDARD FEATURES

Induction-hardened sprockets and HD roller bearings
| Unique tube joiner provides seamless product flow | Continuous Super-Edge flighting on models up to 53' in length | HD reversible gear boxes | Self-levelling motor mounts | Powder coat finish

OPTIONAL ACCESSORIES

Fully equipped packages (gas or diesel engines), including electric clutch, light kit, spring-loaded belt tensioner, shovel holder with shovel, banded belt drives, radial tires and four-wheel frame mounted mover. Other options include PTO drive option, poly spout and fixed intake hopper.

DIAMETER	LENGTHS	CAPACITY
8"	33', 39', 46', 53', 59'	3000 BPH
10"	39', 46', 53', 59'	6000 BPH
12"	39'	10,000 BPH

MERIDIAN TL 1346 HYDRAULIC DRIVE AUGER

NEW PRODUCT

STANDARD FEATURES

No drive shaft, no cumbersome belts or pulleys | Auger flighting features hanger bearings at the joints | 13" is our largest truck load to date | Heavy-duty frame and unique hopper options mean more capacity | Diesel engine that is sure to keep up with the high demands of any farm.



MERIDIAN SWING AUGERS



STANDARD FEATURES

Continuous Super-Edge Flighting | 540 spline and hub connection for flight assembly | Left/right-hand flighting in hopper | Reversing kit standard equipment on 10" and 12" swing augers | Torsion bar assembly to stop head end sway when positioning auger to bins | Powder coat finish

OPTIONAL ACCESSORIES

Polyethylene telescoping spout (42" in length), electric swing hopper mover, light kit, hydraulic worm winch for raising and lowering swing hopper.

DIAMETER	LENGTHS	CAPACITY
10"	65', 75', 85'	6000 BPH
12"	72', 79', 85', 95'	10,000 BPH
13"	75', 85'	13,000 BPH
14"	95', 115'	15,000 BPH



MERIDIAN'S 14" SWING AUGERS WITH 16" EXTENDABLE SWING

Designed to match the 15,000 bushels per hour (BPH) capacity of the 14" auger, the 16" Extendable Swing offers unparalleled convenience with its telescoping design, making it quick and easy to reach trailer hoppers. Featuring 9 feet of telescopic travel and a 2-foot working range, the Meridian Extendable Swing is equipped with hydraulic three-way controls conveniently located on the swing tube for effortless operation. Meridian's high-capacity 14" augers, feature lengths up to 115 feet, Continuous Super-Edge Flighting and durable gearboxes that ensure smooth, efficient and long-lasting performance.

SWING STANDARD FEATURES

Telescoping auger with three-way hydraulic controls on the swing tube | 15,000 BPH capacity | Self-levelling hopper | Powder coat finish

MERIDIAN UTILITY AUGERS

STANDARD FEATURES

Heavy-duty build | Continuous flighting | Powder coat finish

AVAILABLE OPTIONS

Mounting kit | Standard auger boot | Extensions (5', 10', 15') | Universal boot | Intake shield

DIAMETER	MOTOR PULLEY REQUIRED	FLIGHTING SPEED	SUPPLIED BELT SIZE
6"	2B 3¼"-4"	480-580	B44
8"	2B 3¼"-3½"	480-510	B44
10"	2B 3¼"-3½"	480-510	B44



CONVEYORS

AGI HUTCHINSON PORTABLE GRAIN PUMP

CHAIN AND PADDLE GRAIN PUMP

This powerful, yet low horsepower chain conveyor uses paddles to move commodities gently and consistently, no matter the working angle. Available in electric or PTO drive options.



AGI BATCO CONVEYORS



UCX³ ALL FARM COMMODITY FIELD LOADER

The UCX³ has been designed to handle anything a farm throws at it. This all farm commodity field loader is equipped to tackle tough jobs, like canola and fertilizer, with the help of its two belt scrapers, belt brush and a turbo clean wash system. With an improved mover kit, increased belt take-up and more, the UCX³ is the multi-purpose field loader your operation needs.

HIGH CAPACITY BELT CONVEYORS

These AGI Batco belt conveyors are built tough to perform, yet designed and engineered for gentle handling of delicate crops, seeds and commodities. Find the unit that's right for your operation today.

MODEL	LENGTH	CAPACITY
1500	35'-100'	up to 6000 BPH
2000	45'-120'	up to 9000 BPH
2400	55'-120'	up to 14,000 BPH

MOVING MULTIPLE COMMODITIES?

Look for a belt conveyor with features to help you switch from one commodity to the next with ease, like the AGI Batco BCX³.



MERIDIAN TRUCK LOADING CONVEYOR

CONVEYORS



STANDARD FEATURES

10" tube, 20" chevron belt | Electric belt drive | 5' low-profile collapsible intake hopper | Smooth intake from hopper to tube transition | Electric clutch | Hydraulic lift | 4-wheel hydraulic mover with joystick power steering | Adjustable spout

OPTIONAL ACCESSORIES

13" flexible downspout, LED light kit, intake hopper, cover hoppers, transport light packages and more.

MODEL	REACH (30°)	MAXIMUM CAPACITY
45	20' 8"	12,000 BPH
55	25' 9"	12,000 BPH

MERIDIAN CANOLA READY CONVEYOR

NEW PRODUCT

STANDARD FEATURES

Only five rollers | 12,000BPH | The unique straight hopper design features the lack of an "S" transition for a clean and contained transition from the hopper to the tube | The CR features an upgraded drive roller, skived belt, and improved hopper design to add the versatility of handling canola

MODEL	REACH (30°)	MAXIMUM CAPACITY
45	20' 8"	12,000 BPH
55	25' 9"	12,000 BPH



SPRAYING ACCESSORIES

HANDLER H12 15-GALLON CHEMICAL MIXER

Pierce, empty and clean 10 L and 20 L jugs without slowing down sprayer filling. Ideal for one-person operations. Features a special 1.5" venturi designed for sprayers with capacities of 500 gallons or less. 2" camlock connections.

(3028099)



HANDLER H33P65 70-GALLON CHEMICAL MIXER

The most versatile of all Handlers. This unit comes with a 70 US gallon tank, steep cone tank, agitation nozzle, dual inlet venturi, Rotacraft tank rinsing nozzle, 3" Banjo pump/GX200

Honda engine and 3" camlock connections. Water bypass rates are accomplished with almost no reduction in flow for your sprayer.

(3097425)



PUMPS

SOTERA 12-VOLT CHEM PUMP KIT — THE CHEMTRAVELLER



Fits any mini-bulk container featuring a 2", 4" or 6" opening. Features an 850 digital meter driven by a 12V DC motor, 1" x 9' and 1" x 12' EPDM hose, sturdy steel frame. Moves product at 13 GPM at a 15PSI with +/- 0.2% accuracy. A short frame 12V DC chemical transfer pump with 850 digital meter, that can produce up to 13 GPM at 15PSI (1 Bar) maximum pressure. The pump uses a glass-reinforced polypropylene housing that is designed with Santoprene® diaphragms, EPDM elastomers and a thermally protected motor. Includes 1" accessories.

(3031846)



POLYWEST 3" PACER PUMP WITH PROTEC KIT

Excellent durability, strength and resistance to chemicals and fertilizer. Self-priming 6.5-HP Honda GX160 engine.

(3097870)

LIQUID HOLDING TANKS

FLEXAHOPPER 2000-GALLON VERTICAL CYLINDRICAL TANK

One-piece seamless construction with UV- and impact-resistance. Chemical- and corrosion-resistant. Safe for potable water. 94" height x 97" diameter. (3118684)



FLEXAHOPPER 185-GALLON TURTLE TANK

One-piece seamless construction. Semi-transparent, chemical- and corrosion-resistant. Safe for potable water. 60.75" x 51.75" x 28.75" high. (3087079)



NORWESCO 300-GALLON HORIZONTAL LEG TANK

Moulded in legs act as baffles to reduce sloshing. 81" length x 30" diameter. (583641)



KOENDERS 360-GALLON WATER TANK

Semi-translucent. Designed to fit through doorways. Oval. 54" x 30" x 79" high. (3102746)





BUILDING PLANS FOR A BETTER TOMORROW

At Co-op, we understand you need your tools, equipment and buildings to work for you. This is why our farm building plans are purposefully designed and built. With any planned investment, it pays to get the job done right. It also pays to get a building that accommodates your operation and provides room for you to grow.

Your local Co-op can meet with you and help bring your farm building visions to life — from developing the plans, either from our templates or custom-made, to supplying the materials. Co-op offers flexibility in design and material options, a wealth of farm and building expertise, construction and development support — all with the efficiency of a one-stop shop.

If you're planning to expand existing structures or build new, consider your local Co-op.

**FINANCING
OPTIONS AVAILABLE**

FARM BUILDINGS



FARM SHOP

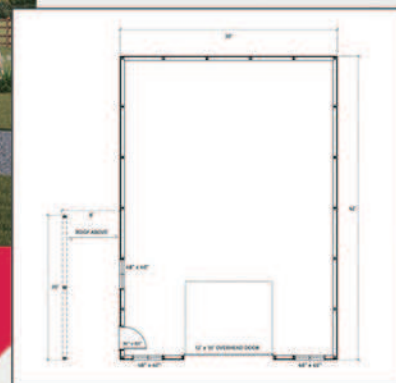
30' x 42'

Total Width: 30 ft.

Total Depth: 42 ft.

Wall Height: 12 ft.

- Economic post-frame construction
- 12' x 10' overhead door
- Covered side entrance



FARM SHOP

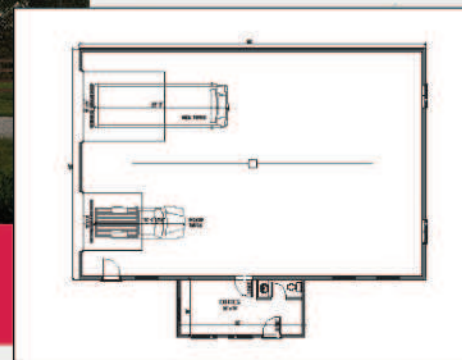
40' x 60'

Total Width: 40 ft.

Total Depth: 60 ft.

Wall Height: 16 ft.

- Oversized 12' x 14' overhead door
- 10' x 10' overhead door
- 60' depth allows for a large work area





MACHINE STORAGE

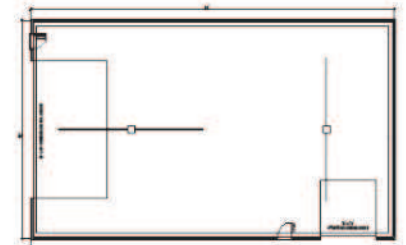
48' x 80'

Total Width: 48 ft.

Total Depth: 80 ft.

Wall Height: 18 ft.

- | Stud frame
- | 30' wide x 16' high overhead bi-fold door
- | 12' x 12' overhead door on side



MACHINE STORAGE

64' x 120'

Total Width: 64 ft.

Total Depth: 120 ft.

Wall Height: 18 ft.

- | Post frame
- | 18' walls for large machinery
- | 40' wide x 18' high overhead bi-fold door
- | Two 12' x 14' overhead doors on side



FARM BUILDINGS



FARM BARN

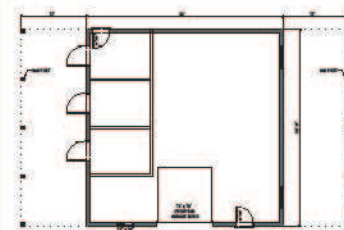
36' x 36'

Total Width: 36 ft.

Total Depth: 36 ft.

Wall Height: 12 ft.

- 12' of additional covered storage per side
- Includes three stalls with stable doors
- 10' x 10' decorative overhead front door



HAY STORAGE

40' x 60'

Total Width: 40 ft.

Total Depth: 60 ft.

Wall Height: 20 ft.

- 20' walls for easy access and optimum storage
- Various configuration options available
- Low maintenance interior/ exterior



FARM BUILDINGS



AIRPLANE HANGER

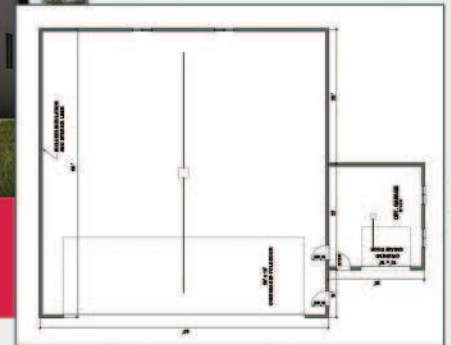
60' x 60'

Total Width: 60 ft.

Total Depth: 60 ft.

Wall Height: 18 ft.

- Wide truss span allows most small to medium aircraft
- Large 50' x 16' overhead bi-fold door
- Includes optional 22' x 20' garage with 10' x 10' overhead door



RIDING ARENA

60' x 120'

Total Width: 60 ft.

Total Depth: 120 ft.

Wall Height: 16 ft. Arena/
12ft. Stables

- Ergonomic post-frame construction
- Attached 36' x 42' stable area with 4 stalls and a tack room
- Two 11'7" x 12' split sliding barn doors give outside access to arena



BUILDING SUPPLIES



STEEL-CLAD FARM BUILDINGS

Steel-clad farm buildings have long been part of the landscape in Western Canada. Rural homeowners and farmers alike have counted on steel's strength and durability for decades, and Co-op's suppliers, Westman Steel and Vicwest, have made great strides in product innovation. These advancements in steel siding and roofing cladding make barns and shops highly functional, visually appealing and ultra-long lasting. Customers no longer have to choose between aesthetic or functionality, they can have both!

OVERHEAD DOORS

When it comes to farm buildings, door access and function are important. Today's farm buildings often serve many purposes — so options to fit these varied needs are essential. With a wide selection of hydraulic, sliding, bi-folding and overhead doors, your local Co-op can help you make the most of your farm buildings.





HIGH-QUALITY FUEL WHEN YOU NEED IT

Co-op is a proud manufacturer of homegrown fuel solutions.

Since 1935, the Co-op Refinery Complex (CRC) in Regina has fuelled Western Canada with high-quality Co-op products, including gasoline, diesel, propane and lubricants.

The CRC has grown into one of Canada's largest integrated refining and upgrading complexes with the capacity to process

130,000 barrels of crude oil per day. Sourcing crude oil from Western Canadian suppliers and grain from Western Canadian farmers — used in the production of ethanol at the Co-op Ethanol Complex — Co-op products support local businesses and communities.

Not only can you get high-quality fuel from your local Co-op Gas Bar, but participating Co-ops offer everything you need for bulk fuel delivery and storage, including:

- Wide selection of tanks up to 100,000 litres
- North Star Tattle Systems and Fuel Lock security
- Pumps and accessories from Fill-Rite and GPI

Visit your local Co-op Agro Centre for the products and services to safely and effectively fuel your operation.



When it comes to storing fuel on your farm, safety and reliability are paramount. That's why choosing a ULC (Underwriters Laboratories of Canada) tank is a smart decision for any fuel storage needs. ULC listed tanks are built for fuel applications, engineered with the proper venting considerations in mind and constructed using high-quality materials ensuring durability and longevity. These tanks meet or exceed industry standards for safety and performance.

Available in a full range of sizes and multi-compartment configurations, AGI Westeel's Fuel-Vault horizontal, dual-wall storage tank is the easiest and most environmentally safe way to store flammable or combustible liquids. Features durable steel construction, secondary shell that provides 100 per cent containment, is weather- and corrosion-resistant, and features gauge and drain openings with lockable weatherproof cover for tanks larger than 11,000 litres.



OPTI-VAULT DUAL-WALL PETROLEUM TANK

Opti-Vault features dual wall containment for enhanced safety and environmental protection and is ULC S601 certified. Opti-Vault is available in 25,000 and 35,000 litre sizes. Designed to cater to the needs of medium-scale farmers, Opti-Vault offers the ideal balance between capacity and convenience.



ROAD-VAULT FLAT-TOP MOBILE PETROLEUM TANK

Features low-profile designs for unobstructed rear views and J-bolt or strap hold-down for easy installation and removal. Powder-coated finish prevents corrosion and fading.

NOTE Transport Canada approved for gasoline and diesel (CAN/CGSB-43.146). Variety of models (L-shaped, double-wall, non-code tanks) and sizes available.



DOUBLE WALL CONTAINMENT TANK

Meridian's double wall containment tanks prevent costly leaks and provide environmentally safe storage.

STANDARD FEATURES:

ULC-approved | Single or split tanks | High-volume pumps | Arctic hose and auto nozzle | Hose retractors | Tank-level site gauge | Bottom-fill system (15,000–100,000 L) | Baked-on, powder-coated paint finish | Designed for both agricultural and commercial applications

MODEL	VOLUME (litres)	DIAMETER (inches)	LENGTH tank only (inches)	LENGTH with skid (inches)
MDW-2300	2310 L	51"	77"	89"
MDW-4595	4595 L	51"	148"	160"
MDW-4600	4607 L	51"	148"	160"
MDW-10000	9972 L	64"	211"	225"
MDW-15000	14,900 L	90"	149"	233"
MDW-25000	24,890 L	90"	248"	332"
MDW-35000	38,846 L	90"	352"	436"
MDW-50000	50,015 L	119"	280"	377"
MDW-65000	65,100 L	119"	364"	432"
MDW-75000	75,800 L	119"	424"	522"
MDW-100000	100,000 L	127"	N/A	594"

MERIDIAN ECONO TANKS

Econo Tanks are the newest double wall tank from Meridian — ULC-certified with a premium powder coat finish, welded V-skid and more!

MODEL	VOLUME (litres)	DIAMETER (inches)	LENGTH (with skid) (inches)
*EDW-15000	14,900 L	90"	149"
*EDW-25000	24,890 L	90"	248"
*EDW-35000	35,051 L	90"	352"



SECURITY AND MONITORING

FUEL LOCK

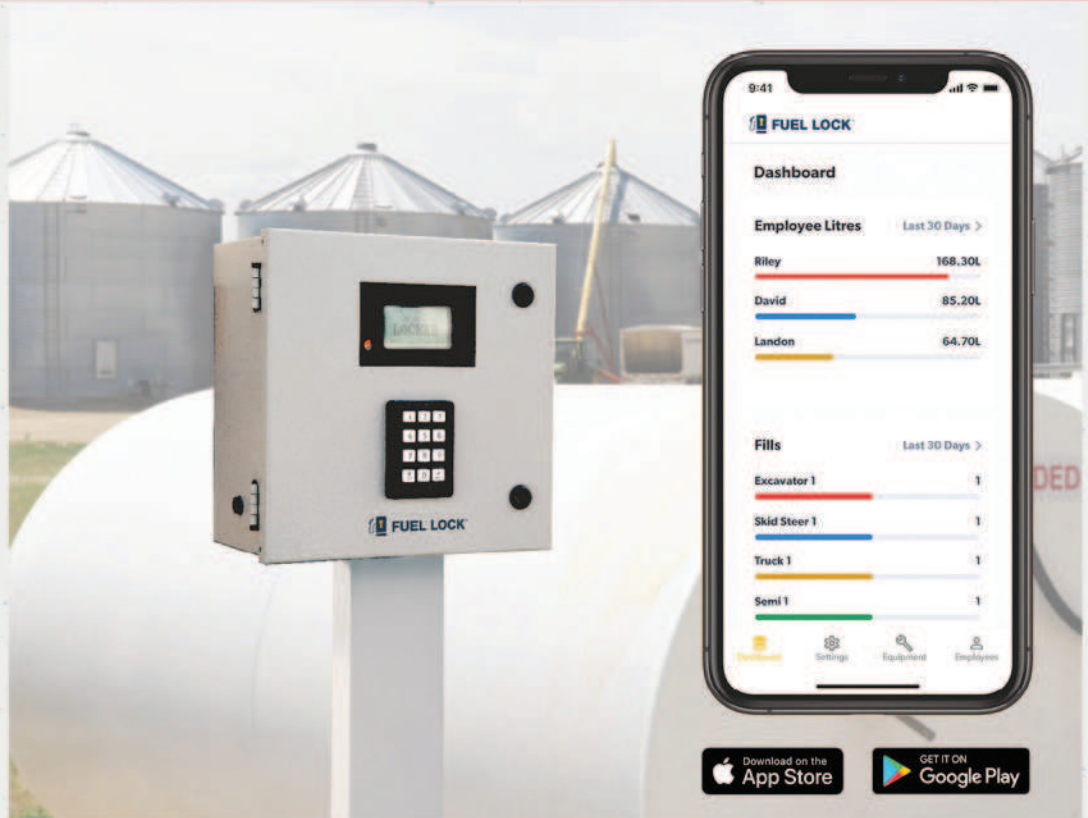
SECURE IT. VIEW IT. TRACK IT.

Secure your fuel tanks with individual user access, real-time app alerts, and user-friendly fuel reports.

TEST DRIVE THE DEMO APP FOR FREE

Search for Fuel Lock Device Demo on the App Store or Google Play.

Reach out to your local Equip Team member for a demo.



NORTH STAR SYSTEMS FUEL MONITORING

FUEL TATTLE AND FUEL TATTLE GAUGE REMOTE MONITORING FOR FUEL

FUEL TATTLE and FUEL TATTLE GAUGE are specifically designed for any size of diesel and gasoline tanks or tanks with a mechanical float arm. North Star Systems' fuel products offer a controlled, remote monitoring and data solution for location and level, and are self-powered. FUEL TATTLE utilizes pressure sensors that range from submersible to threaded for installation to external valves, while FUEL TATTLE GAUGE connects to many sizes of dials for various tank types. Through an online portal or Tattle Systems Go Mobile app, you can view all of your fuel tank assets, product inventory and product levels in real time.

BENEFITS

Real-time remote access | Optimize inventory level | Asset security |
Data generation | Minimize environmental impact



LUBRICANT STORAGE

CONVENIENCE, PROTECTION, GUARANTEED

We understand that having the right lubricant on hand for your equipment can determine if you get the job done or call it an early day. That is why the most used Co-op Premium Lubricants are available for bulk delivery. This allows for reliable and efficient service to alleviate pain points like packaging and disposal while reducing the need to constantly monitor your inventory.

To learn more about bulk deliveries of Co-op Premium Lubricants, scan here.



BENCH TANKS

A bench tank system is an attractive yet functional workbench in addition to convenient storage for lubricants and oils.

MODEL	DESCRIPTION
W1110-EV	1135 L package with 5:1 pump, 50' reel, count-up meter, FRL and sight gauge
W2210-EV	1500 L package with 5:1 pump, 50' reel, count-up meter, FRL and sight gauge
W2220-EV	1500 L split tank package with [2] 750 L compartments, [2] 5:1 pumps, [2] 50' reels, [2] count-up meters & [2] sight gauges and FRLs

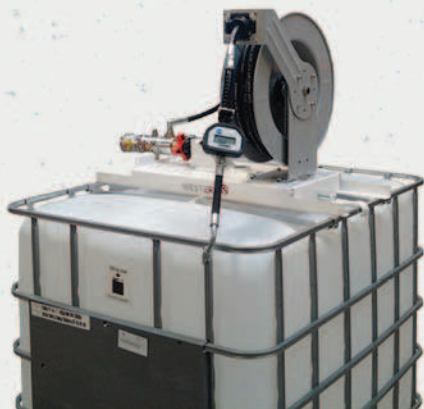
ENVIROSTAX

Envirostax is a durable storage system for efficient bulk oil supply right in your shop.

MODEL	DESCRIPTION
ES-454-1-COOP	Single 454 L EnviroStax Tank Kit with placard
ES-454-2-COOP	Dual-Stacked 454 L EnviroStax Tank Kit with placard
ES-681-1-COOP	Single 681 L EnviroStax Tank Kit with placard
ES-454-681-2-COOP	Double-Stacked 454 L and 681 L Tank Kit with placard
ES-681-2-COOP	Dual-Stacked 681 L EnviroStax Tank Kit with placard
ES-1181-5170-RV-COOP	1181 L tank complete with 5:1 pump, 50' reel, Electronic Totalizing Meter, FRL with placard
OPTIONAL EQUIPMENT PACKAGE	
ES-5155-RV-KIT	Wall-mount equipment package for EnviroStax



LUBRICANT STORAGE ACCESSORIES



TOTE MOUNTING EQUIPMENT

Tote mount equipment package with 5:1 pump, 50' composite spool reel, electronic totalizing meter, FRL, mounting brackets and suction hose kit (Model: 5170-TMTK-RV-COOP)



DRUM DOLLY

3:1 mobile oil pump kit with hose reel, along with digital oil-control valve and meter. Supports up to 400 lb. drum and includes reel with 1/2" x 35' hose. Air regulator combo 37812-55, not included (Model: WG54547RV)



DRUM PUMP KIT

Air pump kit for oil, 3:1 pump, digital meter, 1/2" x 15' hose for 205 L drum (Model: 35264-55-D)



GREASERS

Mobile grease dispenser kit for 55 kg kegs. Includes 50:1 pump, 13' x 1/4" hose, drum cover, follower plate, dispense handle, 2-wheel dolly (Model: 64039-55)

MODEL	DESCRIPTION
WG20249RV	Wall-mount hose reel 1/2" x 50' with 2000 PSI rubber oil hose, automatic rewind
WG14241RV	Digital oil control valve meter, count-up
37812-55	Air filter, regulator, lubricator 1/4"
1616-04-04	1/4" steel pipe hex nipple
ENV.PLACARD-A	EnviroStax blank placard 18" x 24" (to be used for EnviroStax tanks product identification)



Implementing propane into floor heaters, brooders, spot heaters, water heaters and more offers clear benefits. Before you get started, it's important that you plan well to ensure success. Here are a few things to consider:

- Tank storage is crucial. Your Co-op Fuel Team member can advise on what size of bulk storage tank you should have installed to meet clearance and storage requirements.
- Tank monitors give you peace of mind that your building or equipment won't run out of propane, no matter the time of day. Tank monitors can alert both you and your supplier to current inventory levels and trigger a propane delivery when levels drop below a preset minimum level.
- Safety is paramount — make sure your barn is clean, dry and at an optimal temperature for livestock to keep health issues to a minimum and unforeseen costs at bay. All propane tanks and equipment must be installed as per gas inspection regulations CSA B149 Code.

Contact your local Co-op Fuel Team member to learn how propane can successfully fuel your agricultural operations.

When it comes to finding the right bulk propane storage for your farm or home, asking an expert will save you time and money in the long run. With over 50 years of experience and trained professionals, Co-op can recommend the right-sized tank for your needs so you can avoid run-outs during peak seasons.

120 GALLON

Best for grain bin heaters, small space heating applications and fuelling small appliances. An upright tank approximately 4' 8" tall and 30" in diameter.

500 GALLON

Best fit for home, garage, small barn and shop heating and small grain dryers. These are approximately 3' 10" high and 9' 10" long, with a diameter of 38".

1000 GALLON

Commonly used for larger homes, garages, shops, barns and higher capacity grain dryers. Multiple tanks may be combined to meet the storage demands of high consumption applications. They are approximately 4' 4" high and 15' 11" long, with a diameter of 41".

2000 GALLON

Used for high consumption applications such as grain dryers or poultry and hog barns. Approximately 4' 8" high and 24' long, with a diameter of 46".

LIVESTOCK FEEDING AND FENCING



RIGHT EQUIPMENT FOR THE RIGHT JOB

At Co-op we have everything you need for low-stress, efficient care of your livestock. If you're looking for handling systems, feeders or monitoring systems, we have you covered.

Whether you run a large, spread-out herd, or keep a smaller one close to home, we have customizable systems to fit your needs.

From bees to bison, and everything in between, Co-op has both poly and metal feeders for your feeding needs.

Some feeders that we carry include:

- Beekeeping Frame Feeder
- Poly Poultry Feeder
- Fenceline Feeders
- Bunk Feeders
- Creep Feeders
- Bale Feeders

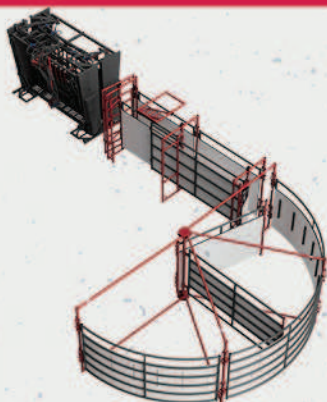
Once you have your handling system and feeders, we can help get you set up with a

monitoring system so that you can keep an eye on your herd from anywhere and keep connected with farm-wide Wi-Fi.

See your local Co-op to learn more about your options.

2W LIVESTOCK EQUIPMENT

LIVESTOCK EQUIPMENT



BUILT TO LAST GENERATIONS

2W Livestock Equipment offers a comprehensive range of cattle, bison and equine handling products, along with specialized rodeo equipment and fencing solutions. Custom design services allow you to tailor and expand your setup as your operation grows, ensuring long-term adaptability and efficiency.

HYDRAULIC SQUEEZE CHUTE

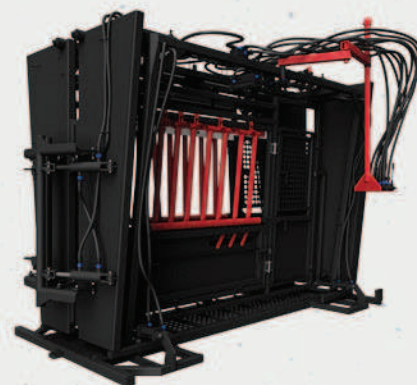
WRANGLER HYDRAULIC SQUEEZE CHUTE

W90004023-Dark Grey

The 2W Hydraulic Squeeze Chute is engineered to provide full access to your livestock while ensuring maximum efficiency and safety. Each side of the chute features five easy-access panels, designed to allow complete reach to all necessary areas when working with your livestock. The foot and body panels drop flat to the ground, making handling smoother and safer. Three slide

locks secure livestock positioning throughout the process.

Powered by a robust 3-HP hydraulic system, the chute operates at 1000 PSI, running seamlessly on either 110V, 220V, or with a gas-powered option—delivering reliable performance, wherever your livestock needs.

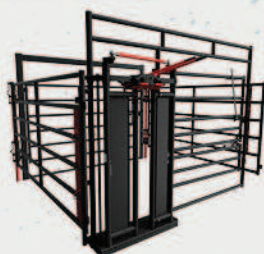


CALF HANDLING EQUIPMENT



CALF TIPPING TABLE

W90003951-Dark Grey



HEALTH CENTRE 10' x 10' (FIXED/ADJUSTABLE)

W90003644-Dark Grey

For general livestock care, 2W offers as part of our Wrangler Series the Maternity Pen, designed to ensure safe and efficient handling during critical health check-ups and calving. When it's time to process your calves, 2W's Calf Tipping Table provides the ideal solution for branding, castrating and vaccinating. Built with solid side panels and a secure handling system, these tools ensure calves stay focused and safely positioned throughout the process.

2W knows the demands of life on the ranch, which is why their gates and panels are built with high-tensile tubing that stands up to the toughest conditions. Whether you're working with cattle on the open range or managing your herd at home, 2W has you covered with panels from 4' to 20' in length and up to 6' high, depending on the series. From the light-duty Diamond Ranch Series for smaller setups to the sturdy Lemsko Series and the rugged heavy-duty Corral Series, this equipment is built to last generations.

GATES AND PANELS



CORRAL 406 GATE HBL

W90003139-Dark Grey



LEMSKO 508 PANEL

W90003073-Dark Grey



REGULAR SKIRTED FEEDER

All feeders and Real Industries products employ the unibody method of construction, giving you "Real" value. Slant bar, skirted, open bottom feeders to bunks or tombstone feeders.



CATTLE SQUEEZE CHUTE

The Real Industries squeeze chute has been improved and upgraded with the goal of achieving a safer and quieter handling experience for both animal and producer. The Real Squeeze is a parallel axis squeeze design that comes standard with a rubber topped steel floor to reduce noise and give the animals better traction.

S.L. METALWORKS



BAR PANELS

Available in 5-rail and 6-rail sections and 10', 12' and 16' lengths to quickly and easily set up a fence-line/corral. They are durable enough to withstand anything that comes up in your daily cattle handling situation. These panels can be hooked up to both Real Industries panel gates and fence-line feeders with ease.



PANEL GATES

10' and 5' panel gates make it easy to install gates into corral panels and move them around without hassle.



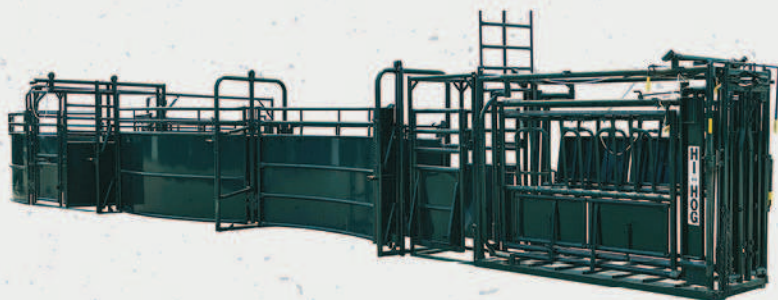
FENCE-LINE FEEDER

Available in 12' and 20' lengths, made with 12 g material and HD 5x5 legs. These can be integrated with Real Industries panels and panel gates, as they have the same connections. Add as many feeders as needed.



BUNK FEEDERS

Bunk feeders come in 12' and 20' sizes. Made out of 12 g material with HD 5x5 legs.



BETTER BY DESIGN SINCE 1974

Hi-Hog manufactures a complete line of cattle, bison, equine, rodeo, parks and oilfield fencing equipment. They offer custom system design and their common connector system lets you add to and adapt your system as your operation expands.

See your local Co-op Agro Centre for pricing on s-alleys, u-alleys, double alleys and custom alleys.

CATTLE & BISON SQUEEZE CHUTES

Each side of the chute includes seven access panels for unmatched animal access. Foot and body access panels open and lay flat against the chute to maximize operator access and come with slide lock safety latches. Hydraulic locked manual head holders are available for both cattle squeeze chutes. The 2-HP electric pump is set at 1000 PSI and can run on either 110V or 220V.



HYDRAULIC SQUEEZE CHUTE

HH# 1556 Electric | HH# 1566 Gas



MANUAL SQUEEZE CHUTE

HH# 1550 | HH# 1536 Head Holder

CALF HANDLING EQUIPMENT



CALVING ENCLOSURE / MATERNITY PEN

HH# 1130 | Optional Skid Platform



CALF ALLEY / CALF TIPPING TABLE

HH# 55

For calving, choose between Hi-Hog's Calving/Trimming Chute or their Calving Maternity Pen. When you're ready to process your calves, consider Hi-Hog's Calf Alley and Calf Tipping Table for branding, castrating and tagging. The sheeted side panels help to keep your calves focused on the path forward while keeping noses and toes safely inside.

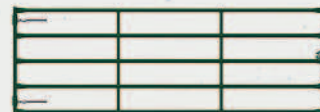
FEEDERS AND EQUINE FRAME

Hi-Hog uses 60,000 PSI, high tensile tubing in all its feeders, stalls, panels and gates. Round bale feeders are available for cow/calf, bull, horned animals and equine. Hi-Hog's durable and versatile farm and ranch panels and gates are available in a variety of heights and lengths. "Handy", "Corral" and "Heavy Duty" Panels and Gates are designed for efficient and safe handling of horses, cattle and bison in robust ranching environments.



HURRICANE BALE FEEDER

HH# 913



HEAVY DUTY GATE 12'

HH# 680 | *wood not included

FEEDING EQUIPMENT

RUBBERMAID COMMERCIAL PRODUCTS



RUBBERMAID POLY TROUGHS 50-300 US GALLONS

Constructed from moulded polyethylene for superior performance and long-lasting durability in all types of weather, with an oversized drain plug for easy draining and cleaning. Seamless, durable, ribbed structural foam with stepped sidewalls, resists weathering, bowing and cracking.

(598441)

HW BRAND 2' HIGH ROUND END GALVANIZED STOCK TANKS

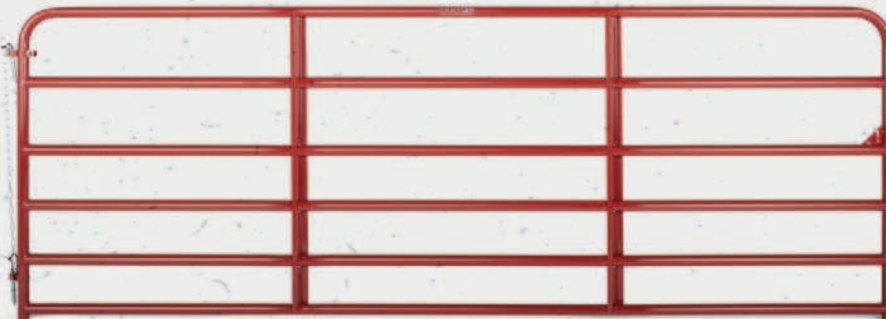
72-406 US Gallons, all feature 1 1/4" BIG TOP rims, with sidewalls and bottoms made of 20-gauge galvanized metal fully locked, swaged, corrugated, welded and sealed. Tanks feature fully seamed Pittsburgh lock bottom.

(593624)



HUTCHISON WESTERN TANKS

TARTER FARM AND RANCH EQUIPMENT



6-BAR LIVESTOCK GATES 8-16' WIDTHS

Designed for light confinement between pastures and entryways. 50" high with vertical Z-braces and is constructed of 1 3/4" steel tubing. Featuring a corrosion-resistant finish. Gates ship with a snap chain, welded chain latch, 6" screw-in hinge pins, an adjustable top hinge and welded hinge on the bottom.

(6085559)

HAYBOSS FEEDERS



HAYRINGS AVAILABLE IN 4 DIFFERENT SIZES

HayRings come in Large Round, Large Square, Multi-Square and Small Round bale sizes. The HayRings feature durable netting and plastic with reinforced aluminum corners and easily fit over any bale.



CLEAN AND CONTROLLED FEEDING SYSTEMS

Galvanized steel for maximum durability | High-quality, thick nylon net is self-tensioned by the spring-loaded roller to stay taut no matter the amount of feed inside | Adjustable floor height of either 16" or 27".

HayBoss has feeders in different sizes; the JR Feeder fits up to eight small square bales, the XL Feeder fits one large rectangle bale up to 4' x 4' x 8' and the Standard Feeder fits any size round bale or up to 16 small square bales. The PenPal is also available and designed for small square bales; it easily mounts to any wall, stall or fence-line.

REIMER WELDING



95-BUSHEL EZE-FEEDER WITH 12 VOLT AUGER AND OPTIONAL HD TRAILER

EZE-FEEDER comes in various sizes. Standard models are skid frame mounted with fork pockets. Fits most pickup beds. Options include HD trailer, digital scale, 12' folding auger, bale deck, remote lid and more. Ideal for grain, pellets, cubes, screenings and more. Epoxy coated interior safe for high mineral/salt content feeds.

6053516 – E9512
6059174 – TK95HD



CALF CATCHER – ATV OR UTV MODEL

Foot operated double doors. Roomy cage to process calves, protected from mother cow. Small inner cage for transporting calves. Digital scale option.

6086243 – C8452U

6078828 – C8452A



15-BUSHEL EZE-FEEDER WITH 12 VOLT AUGER DRIVE

UTV-15 has an epoxy coated interior and fills a 5 gallon pail in 6.5 seconds. Fits most UTV boxes. Optional trailer kit for ATVs or 15" riser for pick-up boxes.

6055792 – UTV15



MIXER-80 WITH 8" VERTICAL MIXING AUGER AND MINERAL HOPPER – 12 VOLT AUGER DRIVE

Customize dry bulk commodities and feed mixes. Easily add minerals and supplements via the side-mounted hopper. Various options available including digital scale.

6091037 – EM8012-MH

CYPRESS INDUSTRIES CREEP FEEDERS

The Cypress Industries 10', 330-bushel creep feeder sits on a 10,000 lb. axle with 11L15 tires. Comes standard with a sliding filling lid that can be opened from the ground level, peaked floor for complete clean-out of feed and stainless steel hardware for years of trouble-free adjustments. Shown with optional 2' rain extensions.



WHOLE EARTH[®] ALL STOCK

A multipurpose feed designed to meet the needs of various livestock species. The product is enriched with yeast culture and omega-3 fatty acids, and is free from animal by-products and medications.

Scan the QR code to
learn more.



AGI POST POUNDERS

FENCING SUPPLIES



AGI Post Pounders make fencing fast and easy. These post pounders are ready to do the work for you and are available in many different sizes and styles to suit your operation.

Wooden fence posts, rails, rough lumber and timber for agricultural and commercial use, locally sourced from NorthWind Forest Products (previously L&M Wood Products) in Glaslyn, Saskatchewan.

NORTHWIND FOREST PRODUCTS



GALLAGHER FENCE ENERGIZERS

Solar- or grid-powered electric fencing is a dependable solution for many applications around the farm.



**GALLAGHER M800
FENCE ENERGIZER**
(4323416)



**GALLAGHER M360
FENCE ENERGIZER**
(4323390)



**GALLAGHER S400 SOLAR
FENCE ENERGIZER**
(4325544)



**GALLAGHER S100 SOLAR
FENCE ENERGIZER**
(4322780)

