



# ANIMAL FEED PRODUCTS



CO-OP AGRO

# WHOLE EARTH®

## POULTRY

No animal by-products or medication.

- A premium feed product from CO-OP® Feeds
- Free of any animal by-products or antibiotics
- Nutritionally balanced for digestible protein (amino acids), minerals and vitamins
- Supplemented with enzymes and gut health modulators for better digestion
- Choice feed for birds’ full satisfaction and optimum performance
- Products are developed by a professional poultry nutritionist
- Feeds are formulated by using the latest research in poultry nutrition

### FEEDING DIRECTIONS

- WHOLE EARTH® Complete Feeds: Feed birds free choice
- Whole Earth Poultry Supplement (Item #6093173): Mix the supplement with on-farm ingredients to make complete diets, as shown below:

Ingredients (kg)	Pullet Grower–Developer (8–17 weeks)	Layer Ration	Meat-Type Birds Grower Ration	Meat-Type Birds Finisher Ration
Co-op 35% Whole Earth Poultry Supplement	150	225	250	200
Wheat (kg)	600	600	600	700
Oats/Barley (kg)	240	100	150	100
Limestone (38% Calcium) (kg)	10	75	–	–
Total (kg)	1000	1000	1000	1000



**POULTRY MANAGEMENT TIPS FOR ACHIEVING OPTIMUM PERFORMANCE:**

- Provide clean drinking water to the birds at all times
- Keep the litter/bedding dry
- Clean the feeders and waterers daily
- Protect from rodents and other scavengers
- Maintain good coop temperature and air quality
- Use good-quality grains
- Remove dead birds, if any, daily

Whole Earth (WE) Poultry Bagged Products								
Product Name	Product No.	Feed Particle Size	Turkeys	Ducks/ Geese/ Guinea Fowl/ Pheasants/ Pigeons/ Quail	Ostriches/ Emus/ Other Ratites	Broiler Chickens	Roaster Chickens	Pullets/ Layers
25% WE Poultry Pre-Starter	6093140	Medium Cr.	0–8 wk	0–8 wk	0–8 wk	0–1 wk	0–1 wk	
20% WE Poultry Starter	6093165	Medium Cr.	8–10 wk	8–12 wk	8–14 wk	1–4 wk	1–5 wk	0–4 wk
18% WE Poultry GR./ FN.	6092696	Short Pellets	10 wk–market	12 wk–market	14 wk–market	4 wk–market	5 wk–market	4–17 wk (GR.)
17% WE Layer Diet	6093108	Short Pellets						18 wk–end
35% WE Poultry Supplement	6093173	Coarse Cr.	See feed label for on-farm mixing guidelines					

**Important Note:** Layer pullets started on medicated starter feed (Item #6093157) can use non-medicated pullet grower (Item #6092696) after four weeks of age.

# WHOLE EARTH®

## SWINE



No animal by-products or medication.

- A premium feed product from Co-op Feeds
- Free of any animal by-products or antibiotics
- Nutritionally balanced for digestible protein (amino acids), minerals and vitamins
- Supplemented with enzymes and gut health modulators for better digestion
- Choice feed for animals’ full satisfaction and optimum performance
- Products are developed by a professional swine nutritionist
- Feeds are formulated by using the latest research in swine nutrition

**WHOLE EARTH PIG GROWER/FINISHER AND SOW RATION (ITEM #6092704)** Piglets can be switched from the Whole Earth Pig Starter ration to the Whole Earth Pig Grower/Finisher when they reach ~40 – 50 kg of body weight until they reach market weight. This can also be limit fed to dry or pregnant sows at a rate of 2 kg/day or 4 kg/day for sows nursing piglets, adding an additional 1 kg for every 3 piglets.

**WHOLE EARTH PIG STARTER (ITEM #6093231)** Provides complete nutrition to young growing piglets. Offer this feed free choice from 5 – 7 kg body weight until pigs are 40 – 50 kg body weight (~12 – 15 weeks).

GUARANTEED ANALYSIS			PIG STARTER	PIG GROWER/FINISHER & SOW
Crude Protein	Min.	%	19.0	16.0
Crude Fat	Min.	%	2.5	2.5
Crude Fibre	Max.	%	4.5	6.0
Sodium	Min.	%	0.2	0.2
Calcium	Min.	%	0.7	0.6
Phosphorus	Min.	%	0.45	0.5
Copper	Min.	mg/kg	80	50
Zinc	Min.	mg/kg	250	150
Selenium	Min.	mg/kg	0.3	0.3
Vitamin A	Min.	IU/kg	10,300	8,000
Vitamin D	Min.	IU/kg	1,540	1,250
Vitamin E	Min.	IU/kg	60	50



# WHOLE EARTH®

## RABBIT

No animal by-products or medication.

Whole Earth Rabbit Ration (Item #6093223) is a blend of high-quality fibre and protein sources combined with a specially balanced amino acid pack, vitamins (including B vitamins), minerals and a probiotic for gut health to support all stages of a rabbit's life. This high-quality, pelleted product provides balanced nutrition in every mouthful. It is fortified with yeast cultures for improved gut health and digestion. Free from animal by-products or medication.

GUARANTEED ANALYSIS			
Crude Protein	Min.	18.0	%
Crude Fat	Min.	3.0	%
Crude Fibre	Min.	16.5	%
Calcium	Act.	1.20	%
Phosphorus	Act.	0.60	%
Sodium	Act.	0.18	%
Vitamin A	Min.	10,000	IU/kg
Vitamin D3	Min.	1,600	IU/kg
Vitamin E	Min.	50	IU/kg

### FEEDING RATE

- Does in gestation: 100 – 150 g daily.
- Does with young: 300 – 500 g daily, gradually increasing towards 0.8 – 1.0 kg/day by time of weaning.
- Weaned/growing kits: 100 – 200 g daily.

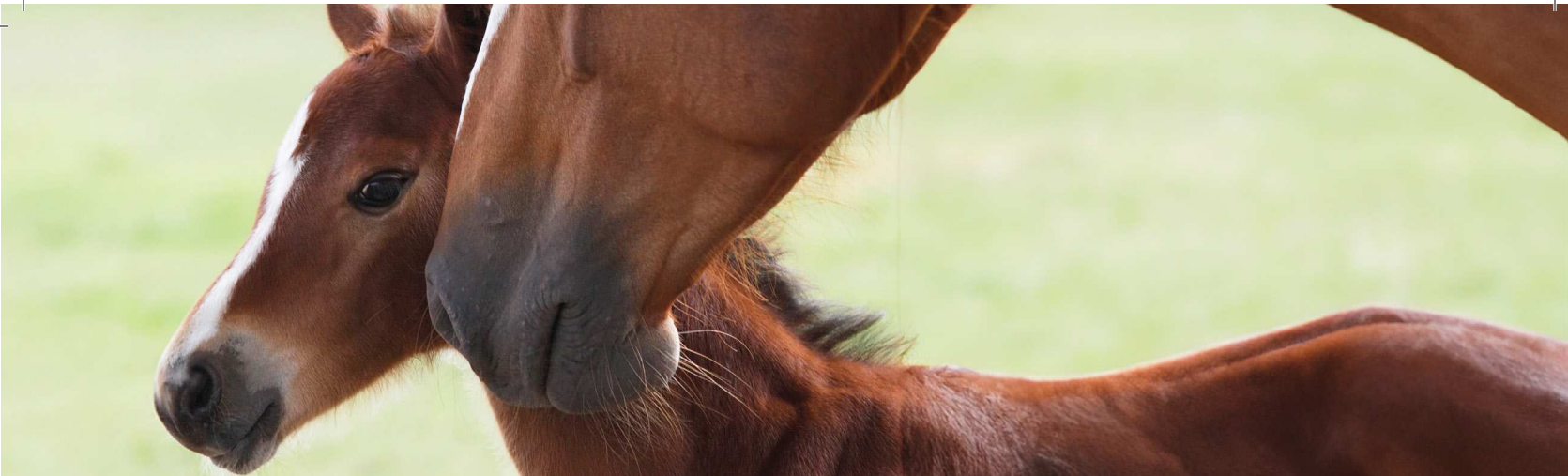


MARE AND FOAL

Supports mares and foals through the most critical periods of their lives.

CALIBER® Mare and Foal Ration (Item #6092886) is a nutrient-dense feed that supports the development of young horses while also meeting the needs of pregnant and nursing mares. The best start in life includes proper nutrition.

FEATURES	BENEFITS
High in digestible fibre	<ul style="list-style-type: none"><li>• Aids in the maturation of the gastrointestinal tract</li><li>• Helps prevent colic and other digestive disturbances</li></ul>
Energy-dense, pelleted formula	<ul style="list-style-type: none"><li>• Facilitates a low feeding rate, important in late gestation when capacity is limited and early in life when foal's intake is low</li><li>• Pelleted form means every mouthful delivers the same nutrients</li></ul>
Amino acid balancing	<ul style="list-style-type: none"><li>• High protein quality supports optimum growth of foals and milk production in mares</li></ul>
Organic trace minerals	<ul style="list-style-type: none"><li>• Highly available form, easily absorbed by mare and foal</li></ul>
Prebiotics (yeast culture)	<ul style="list-style-type: none"><li>• Promotes intestinal health and fibre digestion</li></ul>



GUARANTEED ANALYSIS*											
Crude Protein	Min.	16	%	Calcium	Act.	1.00	%	Iodine	Min.	1.4	mg/kg
Lysine	Min.	0.90	%	Phosphorus	Act.	0.75	%	Manganese	Min.	220	mg/kg
Methionine	Min.	0.30	%	Sodium	Act.	0.40	%	Zinc	Min.	330	mg/kg
Threonine	Min.	0.60	%	Potassium	Act.	0.80	%	Vitamin A	Min.	20,400	IU/kg
Crude Fat	Min.	5.5	%	Magnesium	Act.	0.30	mg/kg	Vitamin D	Min.	2,040	IU/kg
Omega-3	Min.	0.30	%	Selenium	Act.	0.6	mg/kg	Vitamin E	Min.	340	IU/kg
Omega-6	Min.	1.60	%	Cobalt	Min.	4	mg/kg	Biotin	Min.	5,600	mcg/kg

\*All trace mineral and amino acid levels are based on proprietary research and may be higher than reported.

FEEDING RATE

Offer to nursing foals as a creep feed at a rate not to exceed 1 kg per 100 kg of body weight. Feed to weanlings and growing horses at a rate of 0.6 – 1.25 kg per 100 kg of body weight, depending on stage of pregnancy and body condition.

Lactating mares should receive Caliber Mare and Foal Ration at a rate of 0.5 – 1.25 kg per 100 kg body weight, depending on level of milk production and foal’s weight gain.

Forage quality will influence all feeding rates. Feed alongside high-quality forage and water. For more detailed feeding instructions, please refer to label.



# CALIBER<sup>®</sup>

## WORKING HORSE

Highly fortified formula means that the elevated requirements of the working horse are met with a low feeding rate.

Caliber Working Horse Ration (Item #6092910) is a low-starch and sugar ration with added omega-3 fatty acids. The low feeding rate provides high-quality protein and concentrated vitamins and minerals in a small meal size to minimize digestive disturbances. Working Horse Ration is an excellent feed choice for all life stages, including pregnant mares, growing foals and horses in regular exercise.

FEATURES	BENEFITS
Low-starch, high-fat formulation	<ul style="list-style-type: none"><li>• Decreases potential of disruption to digestive system</li><li>• Uses soluble fibre and fat to help meet the energy requirements of working horses</li><li>• Appropriate for metabolic horses</li></ul>
Added omega-3 fatty acids	<ul style="list-style-type: none"><li>• Supports anti-inflammatory processes</li><li>• Improves skin and hair coat</li></ul>
Low feeding rate	<ul style="list-style-type: none"><li>• Overall starch burden remains low</li><li>• Reduces risk of digestive disturbance</li><li>• Maximizes use of forage</li></ul>
Amino acid fortification	<ul style="list-style-type: none"><li>• Promotes muscle fibre development and repair, which is critical for horses in work, training or competition</li><li>• Builds topline</li></ul>
Prebiotics (yeast culture)	<ul style="list-style-type: none"><li>• Promotes fibre digestion and intestinal health</li><li>• Supports digestive system during times of stress</li></ul>



GUARANTEED ANALYSIS*											
Crude Protein	Min.	16	%	Calcium	Act.	1.95	%	Iodine	Min.	2	mg/kg
Lysine	Min.	1.50	%	Phosphorus	Act.	1.30	%	Manganese	Min.	350	mg/kg
Methionine	Min.	0.50	%	Sodium	Act.	0.40	%	Zinc	Min.	500	mg/kg
Threonine	Min.	0.85	%	Potassium	Act.	1.20	%	Vitamin A	Min.	36,000	IU/kg
Crude Fat	Min.	7	%	Magnesium	Act.	0.30	mg/kg	Vitamin D	Min.	3,600	IU/kg
Omega-3	Min.	1.10	%	Selenium	Act.	1.35	mg/kg	Vitamin E	Min.	1,000	IU/kg
Omega-6	Min.	1.65	%	Cobalt	Min.	5	mg/kg	Biotin	Min.	11,000	mcg/kg

\*All trace mineral and amino acid levels are based on proprietary research and may be higher than reported.

**FEEDING RATE**

Feed at a rate of 0.1 – 0.5 kg per 100 kg of horse's body weight depending on activity level and condition of horse, as well as forage quality. This works out to 0.5 – 2.2 kg per 450 kg horse (or 1 – 5 lb. per 1,000 lb. horse). Feed alongside water and good-quality forage. For more detailed feeding instructions, please refer to the label.



# SENIOR AND SPECIAL CARE HORSE

Low-starch, highly digestible fibre ration designed to meet the unique nutritional needs of the senior horse, as well as those with metabolic concerns.

Caliber Working Horse Ration (Item #6092894) is a nutrient-dense feed designed to meet the high demands of working horses with a low feeding rate and reduced starch for digestive support. It includes added fat for sustained energy and amino acids to aid muscle development and recovery during training or competition.

FEATURES	BENEFITS
High in digestible fibre	<ul style="list-style-type: none"><li>• May be used as a partial forage replacement in horses unable to chew hay efficiently</li><li>• Promotes bowel function to minimize the incidence of impaction or colic</li></ul>
High fat content	<ul style="list-style-type: none"><li>• Increased energy density to meet increased energy requirements to maintain body condition in senior horses or hard keepers</li></ul>
Added omega-3 fatty acids	<ul style="list-style-type: none"><li>• Supports anti-inflammatory processes</li><li>• Improves skin and hair coat</li></ul>
Low-starch and sugar content	<ul style="list-style-type: none"><li>• Decreases potential of disruption to digestive system</li><li>• Appropriate for metabolic horses</li></ul>
Amino acid fortification	<ul style="list-style-type: none"><li>• High protein quality to prevent muscle wasting which can occur in older horses</li></ul>
Organic trace minerals	<ul style="list-style-type: none"><li>• Higher bioavailability to improve absorption and utilization, as senior horses are less efficient digesters</li></ul>
Prebiotics (yeast culture)	<ul style="list-style-type: none"><li>• Promotes fibre digestion and intestinal health, supporting the digestive system in times of stress</li></ul>
Antioxidants	<ul style="list-style-type: none"><li>• Supports the immune system, muscle function and joint integrity</li></ul>



GUARANTEED ANALYSIS*											
Crude Protein	Min.	14	%	Calcium	Act.	1.00	%	Iodine	Min.	2.4	mg/kg
Lysine	Min.	0.72	%	Phosphorus	Act.	0.60	%	Manganese	Min.	220	mg/kg
Methionine	Min.	0.24	%	Sodium	Act.	0.35	%	Zinc	Min.	440	mg/kg
Threonine	Min.	0.56	%	Potassium	Act.	1.20	%	Vitamin A	Min.	23,000	IU/kg
Crude Fat	Min.	7	%	Magnesium	Act.	0.30	mg/kg	Vitamin D	Min.	2,300	IU/kg
Omega-3	Min.	1.10	%	Selenium	Act.	0.5	mg/kg	Vitamin E	Min.	500	IU/kg
Omega-6	Min.	1.65	%	Cobalt	Min.	4	mg/kg	Biotin	Min.	5,600	mcg/kg

\*All trace mineral and amino acid levels are based on proprietary research and may be higher than reported.

FEEDING RATE

Feed at a rate of 0.4 – 1 kg per 100 kg of horse body weight, depending on the horse’s activity level, condition and dentition, as well as forage amount and quality offered. This works out to 1.8 – 4.5 kg per 450 kg horse or 4 – 10 lb. per 1,000 lb. horse. Feed alongside good-quality forage and water. For more detailed feeding instructions, please refer to label.





## WEATHERIZED MINERAL

Weatherized minerals delivering consistent, high-quality nutrition throughout the year.

### **POWERMIN (ITEM #6094155)**

Designed for year-round use when feed is of good quality – on pasture, swath/corn grazing or when feeding low calcium forages (such as greenfeed). Hydroxy trace minerals allow for optimal absorption and increased bioavailability to the animal.

### **POWERPLAY (ITEM #6094148)**

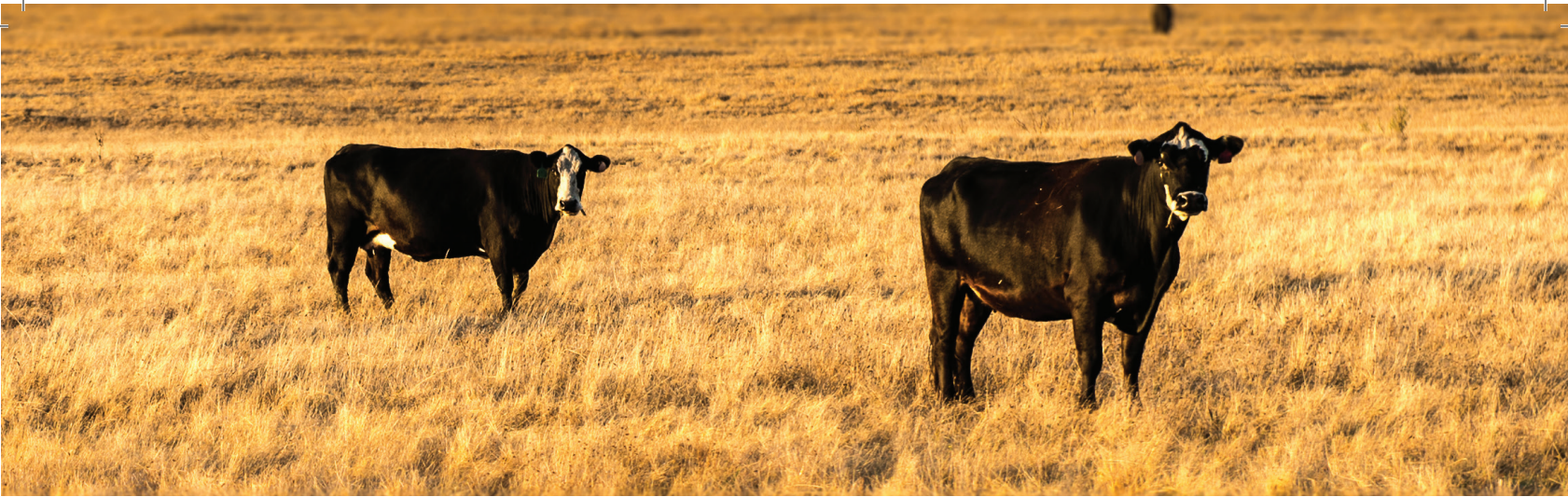
Designed for use when feeding high-quality forages and grazing lush pastures, e.g., during low stress times in the production cycle (early and mid-gestation).

### **POWERPAK (ITEM #6094122)**

Designed for use during periods of high stress (calving, breeding) and poor-quality forage/water situations. Formulated with hydroxy and chelated trace minerals to allow multiple modes of trace mineral absorption and increased bioavailability to the animal.

### **POWERPLUS (ITEM #6094163)**

Designed for use during times of reduced forage quality when phosphorus and trace mineral content may be lacking, e.g., stubble grazing or late fall pasture.



GUARANTEED ANALYSIS		POWERMIN	POWERPLAY	POWERPAK	POWERPLUS
Calcium	%	16	16	11.5	11.5
Phosphorus	%	6	6	9	9
Magnesium	%	3	3	3	2
Salt	%	20	20	18	23
Cobalt	mg/kg	46	46	46	46
Copper	mg/kg	1900	1900	2250	2950
Zinc	mg/kg	5800	5800	6500	8800
Manganese	mg/kg	5800	5800	5600	6600
Iodine	mg/kg	235	235	235	235
Vitamin A	IU/kg	995,000	450,000	995,000	995,000
Vitamin D	IU/kg	57,000	57,000	57,000	88,000
Vitamin E	IU/kg	2500	1000	2200	2500
Hydroxy Minerals (Cu, Zn)		✓	✓	✓	✓
Calcium Magnesium, Carbonate		✓	✓	✓	✓
Natural Vitamin E		✓	✓	✓	✓
Chelated Minerals (Cu, Mn, Zn, Se)				✓	

No additional salt required



# NON-WEATHERIZED MINERAL

Non-weatherized minerals delivering consistent, high-quality nutrition throughout the year.

### ADVANCE

Advance has an increased calcium level and is best suited for low-calcium diets such as cereal forage and grain-based rations. Advance is suitable for times of high stress or demand, such as mid- to late-gestation, calving and breeding. Available with Monensin in 25 kg bags (Item #6094171) or 1000 kg totes (Item #6094189) or without Monensin in 25 kg bags (Item #6094197).

### APEX

Apex has elevated calcium and is best suited for diets with reduced calcium, such as high grain and cereal forage diets as seen in feedlot and backgrounding scenarios. Available in 25 kg bags (Item #6094205) or 1000 kg totes (Item #6094213).

FEATURES	BENEFITS
Hydroxy trace minerals	• Elevated bioavailability compared to sulfate trace minerals
Natural Vitamin E	• Increased absorbability and retention in tissues compared to synthetic Vitamin E
Monensin sodium	• As an aid in the prevention of coccidiosis
Chelated minerals	• Only for advance offer, another method of absorption of trace minerals within the small intestine through the amino acid transporters



GUARANTEED ANALYSIS		ADVANCE	APEX
Calcium	%	16	18
Phosphorus	%	5	4
Magnesium	%	2.8	1
Salt	%	20	26
Cobalt	mg/kg	70	72
Copper	mg/kg	1300	1000
Zinc	mg/kg	4500	4000
Manganese	mg/kg	4500	6500
Iodine	mg/kg	225	225
Vitamin A	IU/kg	1,000,000	400,000
Vitamin D	IU/kg	50,000	40,000
Vitamin E	IU/kg	2500	1000
Monensin Sodium	mg/kg	2750	3000
Hydroxy Minerals (Cu, Zn)		✓	✓
Natural Vitamin E		✓	✓
Chelated Minerals (Cu, Mn, Zn, Se)		✓	



# CO-OP FEEDS

## BEEF MINERALS

Optimize your herd's performance with Co-op.

Co-op's two primary lines of mineral supplements for beef cattle are formulated to meet their vitamin and mineral requirements at any stage. All Co-op brand loose minerals contain garlic flavouring.

### ELITE BREEDER™ BEEF MINERAL

- Premium 2:1 mineral option formulated to include chelated source of cobalt, copper, manganese and zinc, as well as organic selenium, and high levels of vitamins A, D and E to support health and reproduction in highly productive cattle.
- Ideal during calving, breeding and weaning, or when water or forage quality is poor resulting in high levels of iron, sulfur or molybdenum in the diet.
- Available in 20 kg bags of loose mash (Item #6092829).

### BEEF CATTLE RANGE MINERAL

- Versatile mineral line formulated to complement Western Canadian forages and support beef cattle production.
- Non-medicated options can be offered free choice alongside salt to all types and ages of beef cattle.
- Available in 20 kg bags of loose mash as either 1:1 (Item #6092811), 2:1 (Item #6092837), 2:1 medicated (Monensin) (Item #6092845) or 3:1 (Item #6092852) formulations.

Beef Cattle Range Minerals have been formulated specifically for Western Canadian forages to support beef cattle production. Offer these minerals free choice alongside salt to all types and ages of beef cattle. Expected intake is 100 grams/head/day for mature beef cattle.



GUARANTEED ANALYSIS			1:1	2:1	3:1
Calcium	Act.	%	10	16	21
Phosphorus	Act.	%	10	8	7
Sodium	Act.	%	4	4	4
Magnesium	Act.	%	1.8	5	4
Cobalt	Act.	mg/kg	50	50	50
Copper	Act.	mg/kg	3,050	3,050	3,050
Iodine	Act.	mg/kg	150	150	150
Iron	Act.	mg/kg	7,500	6,300	7,500
Manganese	Act.	mg/kg	5,500	5,500	5,500
Selenium	Act.	mg/kg	30	30	30
Zinc	Act.	mg/kg	10,100	10,100	10,100
Vitamin A	Min.	IU/kg	600,000	600,000	600,000
Vitamin D	Min.	IU/kg	60,000	60,000	60,000
Vitamin E	Min.	IU/kg	3,000	3,000	3,000
Recommended for			Alfalfa forages	Mixed forages	Cereal forages

\*Availability varies by region



# CO-OP FEEDS

## BEEF FEEDS

Co-op Feeds has you covered from start to finish with an economical protein supplement, economical complete energy source and a premium calf starter to support every stage.

### HI-GAIN

- Co-op Feeds' HI-GAIN® Cattle Supplement R388 (Item #6092639) is a high-quality and economical pelleted protein supplement, designed to be blended with on-farm grain sources. This product is suitable for many classes of cattle but is ideal for growing and finishing animals.

### POUNDMAKER

- Co-op Feeds' POUNDMAKER® 300 beef ration (Item #6092787) is an economical pelleted complete feed energy source designed to be a grain substitute. This product is suitable to meet the growth or maintenance requirements of all cattle classes.
- Fortified with calcium, vitamins and trace minerals, this product will meet the animals' requirements in these nutrients when fed at 1.5% of body weight daily.

### CALF STARTER

- Co-op Feeds' Dairy Calf Starter (Item #6092860) is a premium textured calf starter designed to be a nutrient dense complete feed for dairy calves, but can also be used for beef calves.
- This product contains organic trace minerals, yeast culture to support gut health and Decoquate to aid in the prevention of coccidiosis.



GUARANTEED ANALYSIS			HI-GAIN	POUNDMAKER	CALF STARTER
Crude Protein	Min.	%	32.0	13	18
Crude Fat	Min.	%	3.0	2.5	3.5
Crude Fibre	Max.	%	8.0	9.0	8.0
Calcium	Act.	%	6.0	1.9	0.9
Phosphorus	Act.	%	0.60	0.5	0.5
Sodium	Act.	%	1.8	0.4	0.35
Vitamin A	Min.	IU/kg	100,000	10,400	14,500
Vitamin D3	Min.	IU/kg	15,000	1,700	2,300
Vitamin E	Min.	IU/kg	400	20	35



# CO-OP FEEDS

## LICK TUBS

Optimize your herd's performance with Co-op.

Co-op offers a diverse range of poured protein and mineral lick tubs to meet your herd's nutritional needs.

Our poured lick tubs are made in Western Canada to deliver the product quality, sound nutrition and performance that Co-op members and customers have come to trust.

### ELITE BREEDER BEEF MINERAL TUBS

- Premium mineral tub fortified with chelated source of trace minerals, high levels of vitamins A, D and E, and added protein to support health and reproduction in highly productive cattle.
- Ideal during calving, breeding and weaning, or when water or forage quality is poor resulting in high levels of iron, sulfur or molybdenum in the diet.
- Available in 100 kg tubs, with (Item #6093249) or without (Item #6093652) added yeast culture.

### SWEET SUPP PROTEIN TUBS

- Versatile protein tubs with added vitamins and minerals.
- Formulated for higher intakes, these protein tubs are ideal for supplementing animals on poor-quality pasture conditions.
- Available in 20% (Item #6093272) or 32% (Item #6093306) work protein 100 kg tubs.

### 2:1 SUMMER MINERAL TUBS

- Versatile, low-intake 2:1 mineral tub, perfect for animals grazing good-quality pasture.
- Gives cattle access to essential minerals year-round, setting them up for productive performance.
- Available in 100 kg tubs (Item #6093256).





# CO-OP PURLAC® PLUS

## CALF MILK REPLACER

Quality milk replacer you can rely on.

Made with 100% milk protein and organic trace minerals, PURLAC® Plus provides highly digestible nutrition for calves. A research-proven, naturally occurring digestive activator is included to improve calf health and performance without the use of antibiotics.

This feed contains added selenium at 0.3 mg/kg. Available in 10 kg (Item #6093421) or 20 kg (Item #6093439) bags.

GUARANTEED ANALYSIS			
Crude Protein	Min.	20.0	%
Crude Protein from milk source	Min.	20.0	%
Crude Fat	Min.	20.0	%
Crude Fibre	Max.	0.25	%
Calcium	Act.	1.0	%
Phosphorus	Act.	0.75	%
Sodium	Act.	0.75	%
Vitamin A	Min.	60,000	IU/kg
Vitamin D3	Min.	10,000	IU/kg
Vitamin E	Min.	200	IU/kg

### IMPROVED HEALTH

- Immune system support results in more vigorous calves.
- Results in less scouring and fewer treatments.

### SUPERIOR PERFORMANCE

- Increases growth, structural development and feed efficiency.

### RESEARCH-PROVEN

- Formula has been extensively peer-reviewed to ensure your calves grow and perform to their full potential.



# CO-OP FEEDS

## SHEEP AND GOAT

Quality feed formulated specifically for sheep and goats.

**16% Market Lamb Complete Grower with Bovatec (Item #6093199)** is to be fed as a sole ration from weaning until age of market. Co-op Market Lamb feed is made of high-quality, low-variability ingredients. It contains ammonium chloride and mineral balancing to prevent the occurrence of urinary calculi.

**2:1 Sheep Mineral (Item #6093215)** is formulated with high levels of magnesium. This feed is designed to be fed to sheep receiving low-calcium feeds such as cereals or cereal-based forages. It is also designed to be fed during lambing and lactation or when sheep are turned onto lush spring pasture. Contains a high level of selenium and Vitamin E to aid in immune function and prevention of white muscle disease.

**Complete Goat Ration (Item #6093181)** is a multi-purpose feed designed for growing and finishing meat goats, as well as for adult goats during periods of higher nutritional demand (late gestation, early lactation and breeding). This ration has been balanced so that it can be fed with minimal forage if necessary. It contains a yeast culture to aid in fibre digestion and establish or maintain a healthy rumen.

GUARANTEED ANALYSIS			16% MARKET LAMB GROWER	COMPLETE GOAT RATION
Crude Protein	Min.	%	16	16.0
Crude Fat	Min.	%	2.5	2.8
Crude Fibre	Max.	%	8.0	12.5
Sodium	Min.	%	0.4	0.55
Calcium	Min.	%	1.2	0.85
Phosphorus	Min.	%	0.5	0.45
Selenium	Min.	mg/kg	0.3	0.3
Vitamin A	Min.	IU/kg	14,600	14,500
Vitamin D	Min.	IU/kg	2,300	2,300
Vitamin E	Min.	IU/kg	400	400



# CO-OP PET FOODS

## CAT AND DOG

Quality you trust. Nutrition they need.

Whether it's keeping barn cats in top shape to manage pests or ensuring farm dogs have the stamina to work long hours, your pet food needs to keep up with your animals' needs.

Co-op Cat and Dog Foods are made in Western Canada by award-winning manufacturer Taplow Ventures Ltd. These veterinarian-formulated products are made with high-quality standards and deliver exceptional value.

### KEY INGREDIENT FEATURES:

**Wild-caught fish:** Formulas that include fish feature a blend of wild-caught herring, anchovies and sardines. Using as much of the fish as possible sets Co-op Complete Pet Food apart from many other fish-based diets. A unique approach to sourcing and utilization ensures a higher meat-to-bone ratio, and a clean fish option with minimal levels of mercury and heavy metals.

**Humanely raised chicken:** Our chickens are humanely raised in North America and are suitable for human consumption before entering the pet food market.

**Carefully sourced:** We prioritize pet health and safety by sourcing ingredients from strictly regulated countries and facilities. Our macro and micro ingredients, such as potatoes, legumes, grains, vitamins and minerals, are predominantly sourced from Canada, the United States and Europe.

### CO-OP COMPLETE PET FOOD PRODUCT OPTIONS INCLUDE:

- CO-OP COMPLETE FORMULA DRY CAT FOOD 7.5 kg (Item #6044432)
- CO-OP COMPLETE FORMULA DRY CAT FOOD 15 kg (Item #6044440)
- CO-OP COMPLETE FORMULA DRY DOG FOOD 15 kg (Item #6046106)
- CO-OP HIGH PROTEIN FORMULA DRY DOG FOOD 15 kg (Item #6046114)



RELEASED NOVEMBER 2025

CO-OP® design, CO-OP®, WHOLE EARTH®, CALIBER®, HI-GAIN®, PURLAC® and POUNDMAKER® are registered trademarks of Federated Co-operatives Limited. PERFORMAX™, ELITE BREEDER™ Trademarks of Federated Co-operatives Limited

[www.agro.crs](http://www.agro.crs)